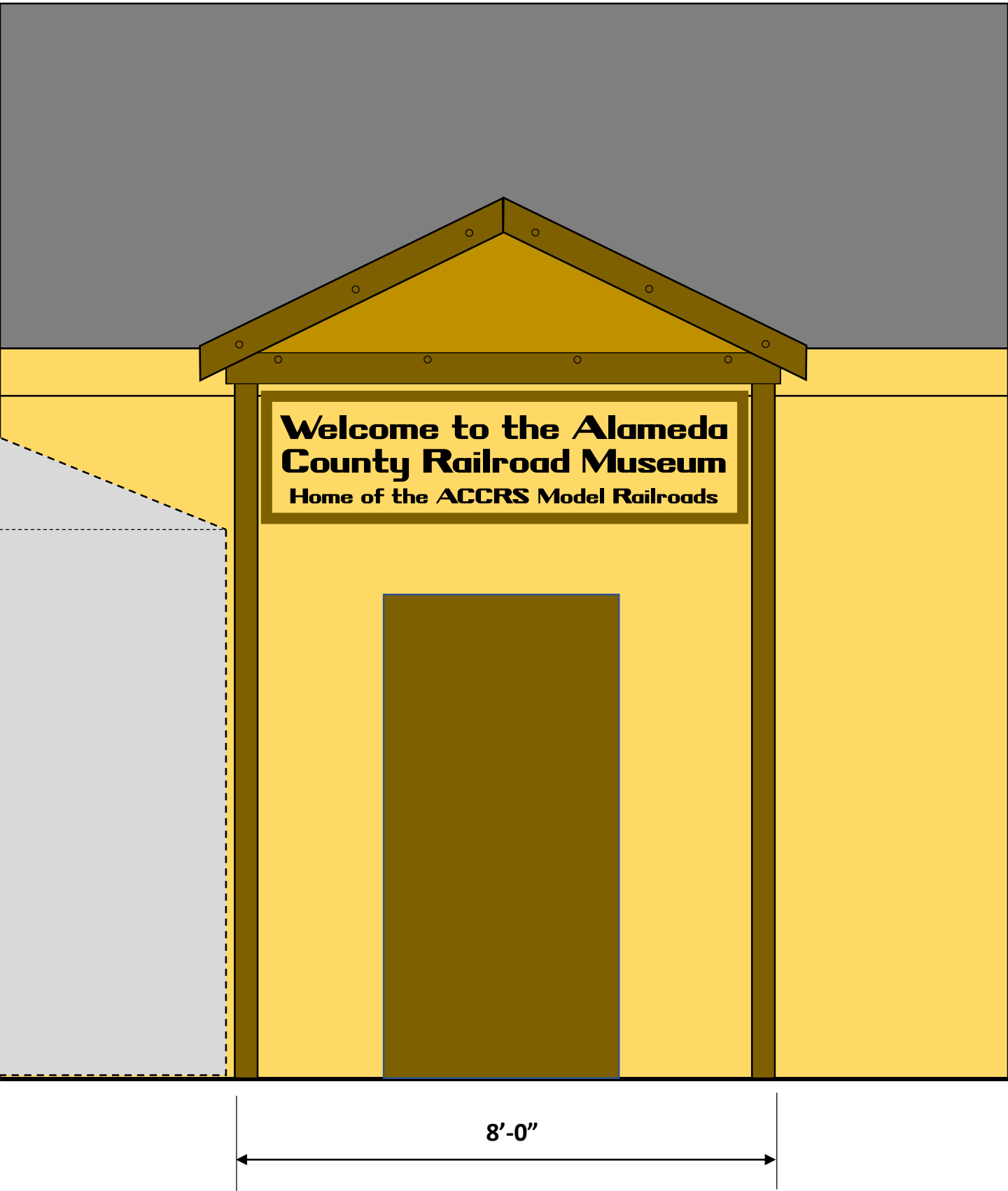
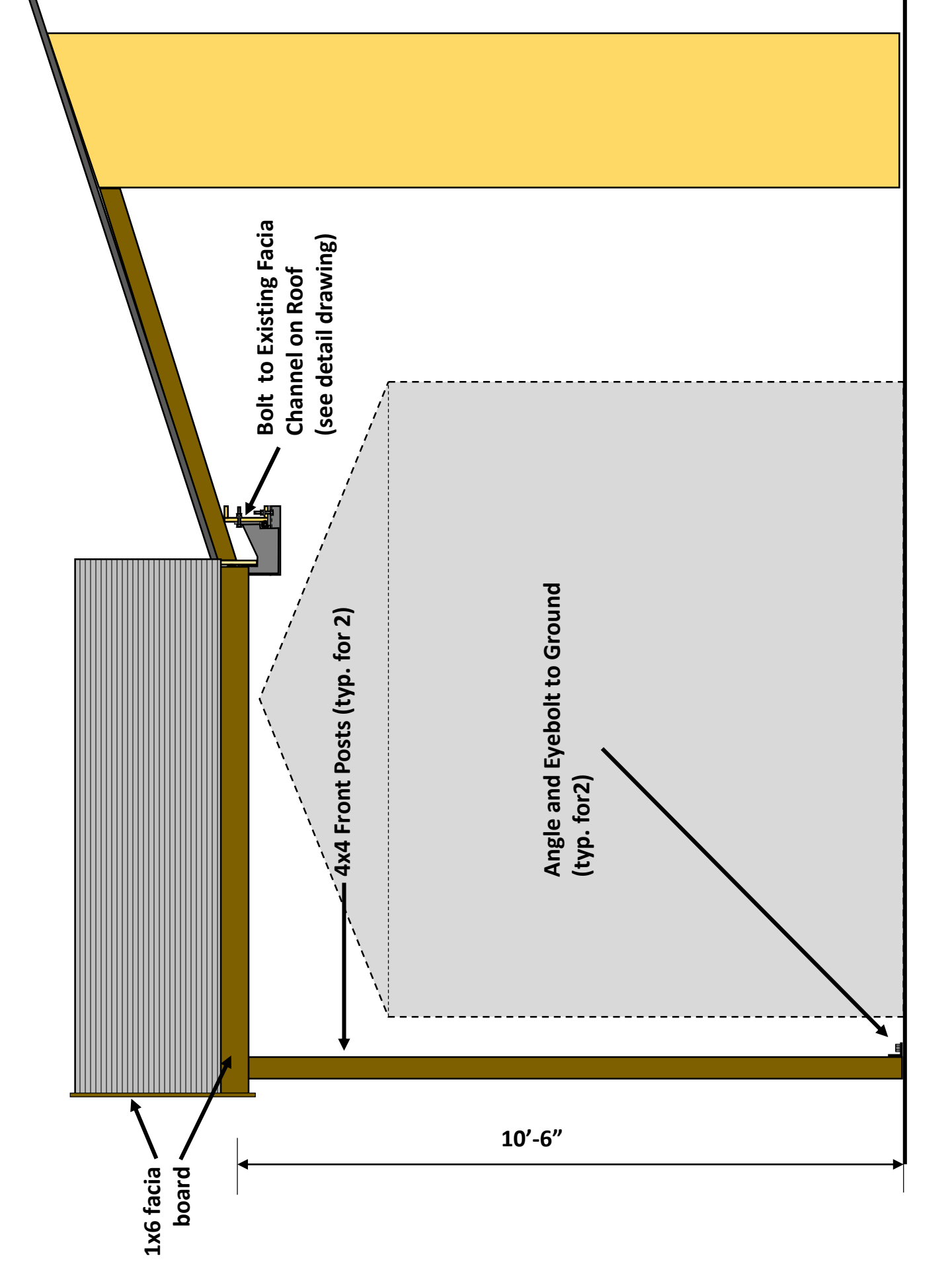


Basic Structure is 8' x 8' with Two 4x4" posts





Bolt to Existing Facia  
Channel on Roof  
(see detail drawing)

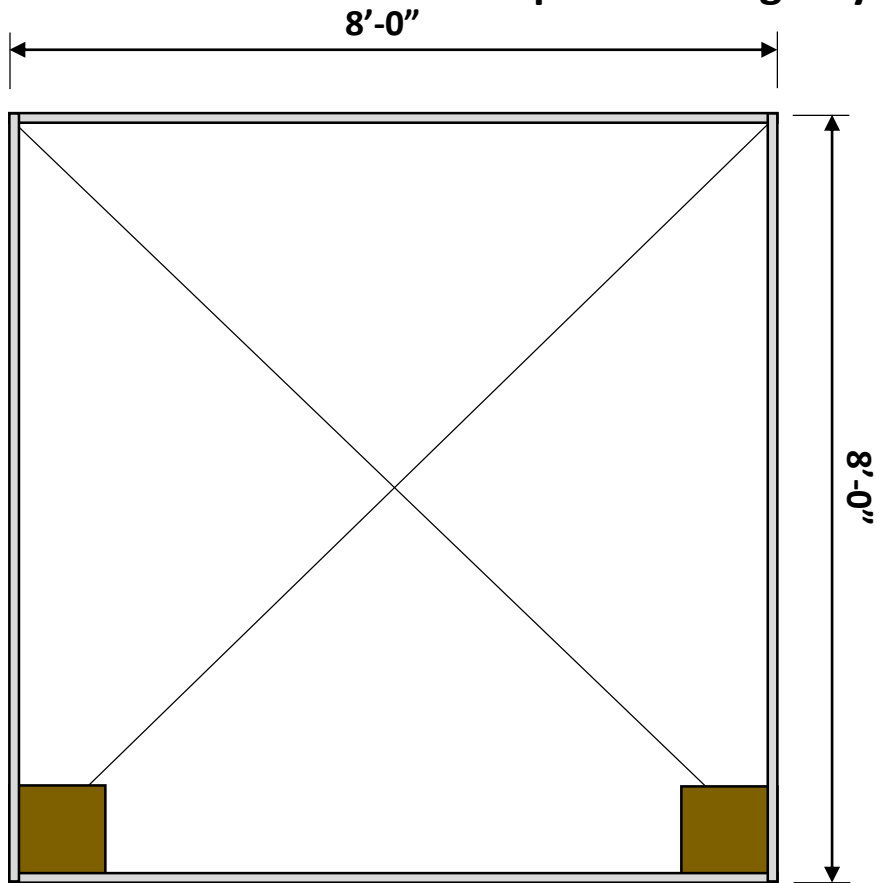
4x4 Front Posts (typ. for 2)

Angle and Eyebolt to Ground  
(typ. for 2)

1x6 fascia  
board

10'-6"

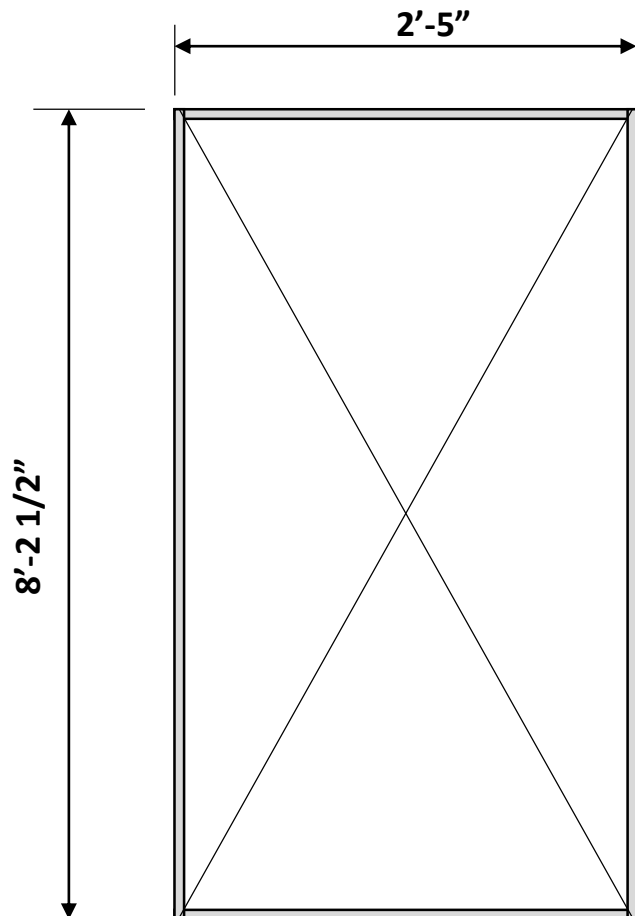
# Roof Frame – 1 inch conduit with cables for square and rigidity



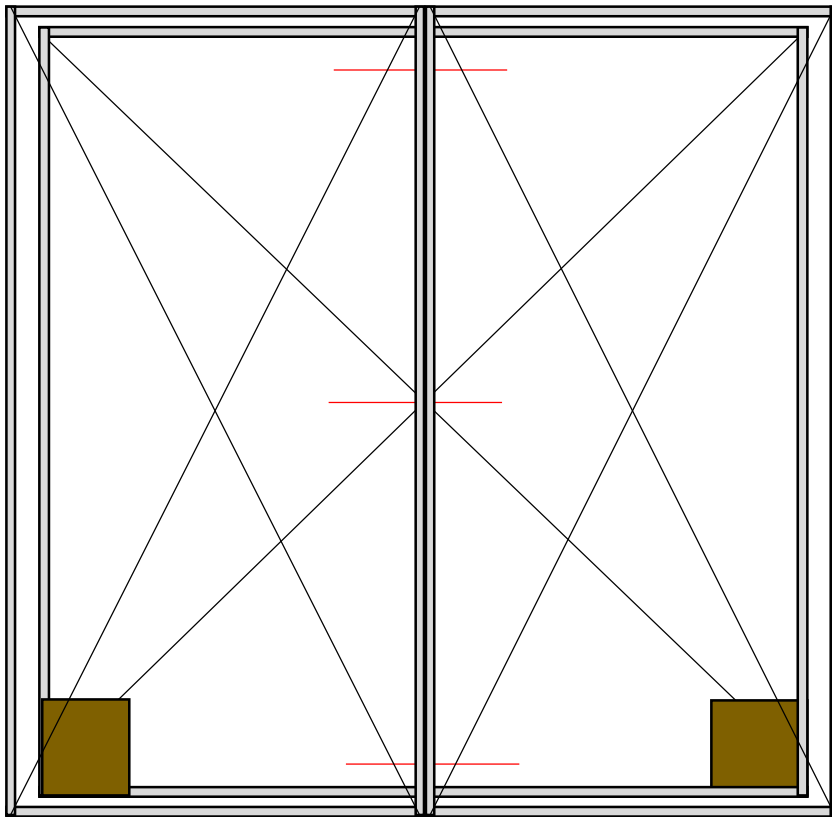
## Roof Base Frame

1. Sits level on posts and fascia attach
2. Overhangs to support roof joist frames at each end
3. Side pieces extend through the fitting for strength
4. Corner tees will be screwed for strength
5. Two 6"x6" plates screwed to underside of frame at two front outside corners for leg attachment

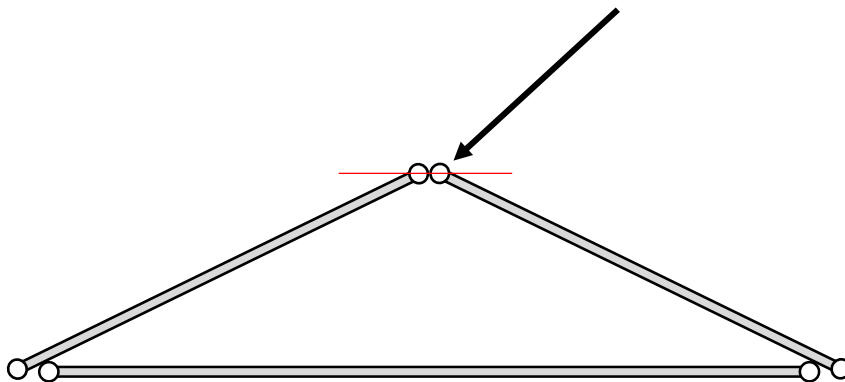
## Roof Joist Frames (typ for 2)



# Roof Frame – upper frames over lower frame

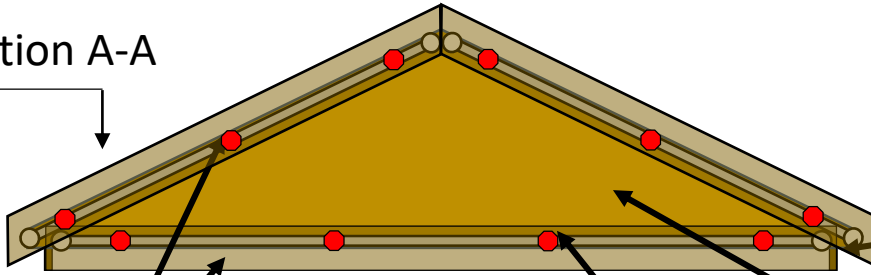


Conduits bolted together – typ. For 7 locations  
All Bolts to be ¼" with Lock Washers



# Details

Section A-A

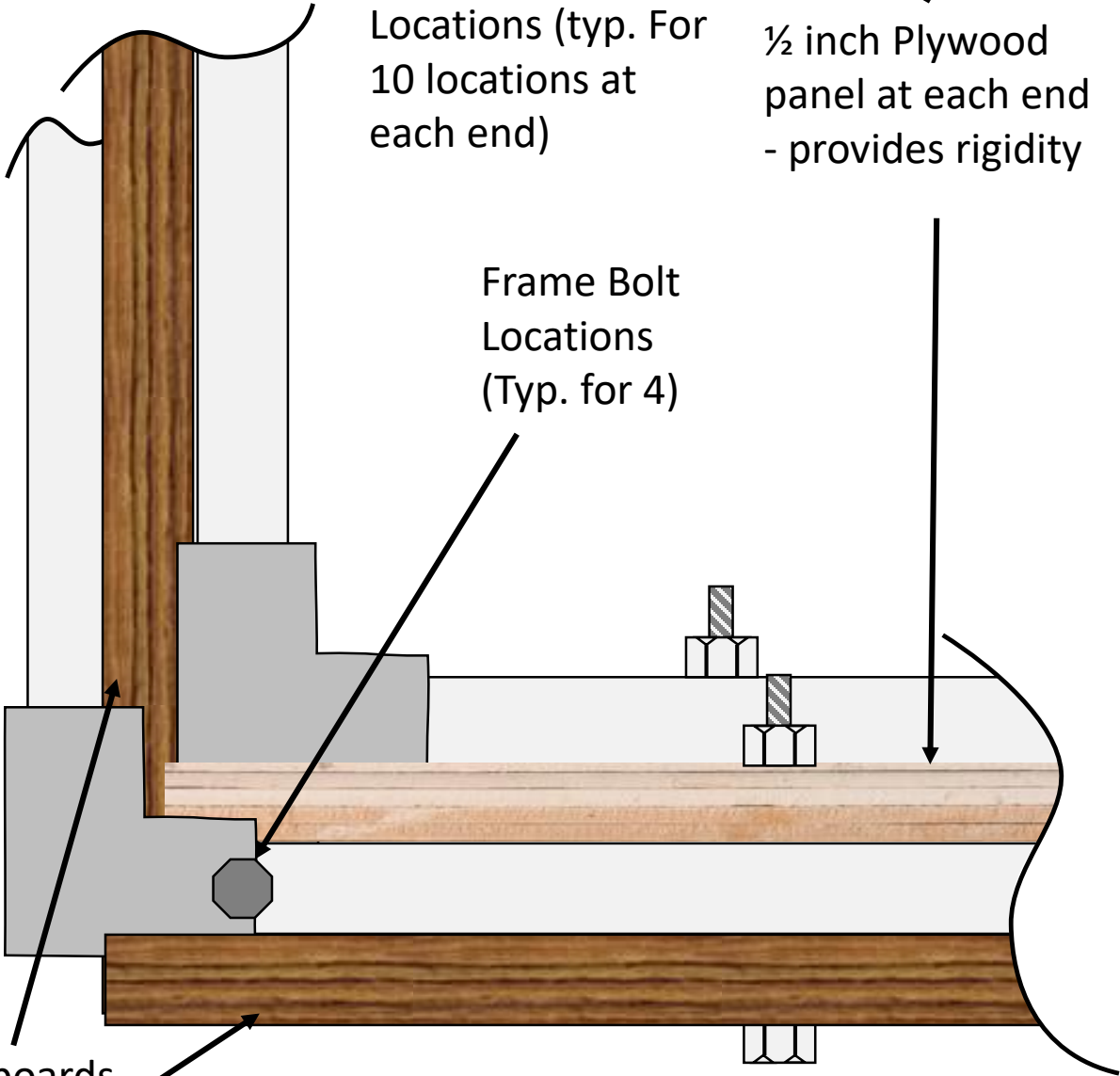


1x6 fascia plate bolted to conduit @ 3 locations (typ. For 2 on side)

1x6 Front Facia (transparent for detail)

End Plate Bolt Locations (typ. For 10 locations at each end)

1/2 inch Plywood panel at each end - provides rigidity



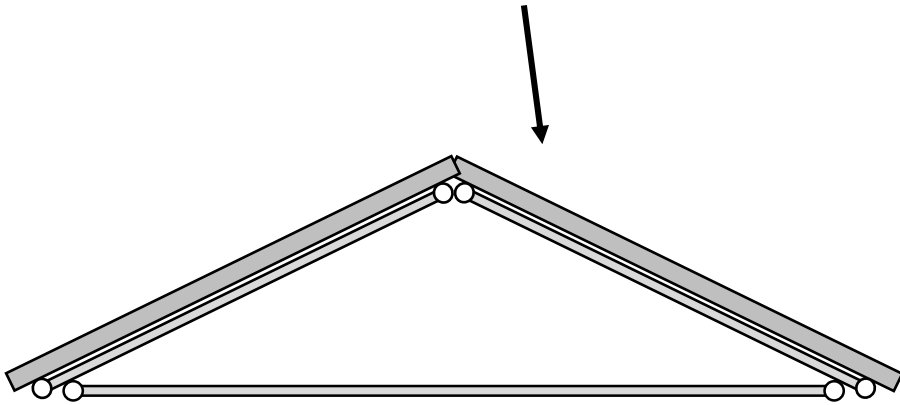
Frame Bolt Locations (Typ. for 4)

1x6 Facia boards bolted to conduit

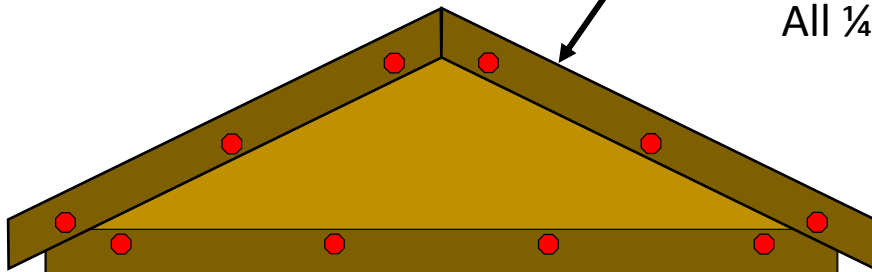
Section A-A – connection assembly point  
Plywood fillers bolted to each conduit (Typ. For 10 locations each end plate)

# Roofing and Front Facia Assemblies

Corrugated Roofing – Metal or plastic – screw to conduits



1x6 facia plate  
bolted to conduit  
@ 3 locations on  
front, 2 on side  
All ¼" bolts



## Storage

2 – 5'-5" x 8' roof panels with attached corrugated roofing

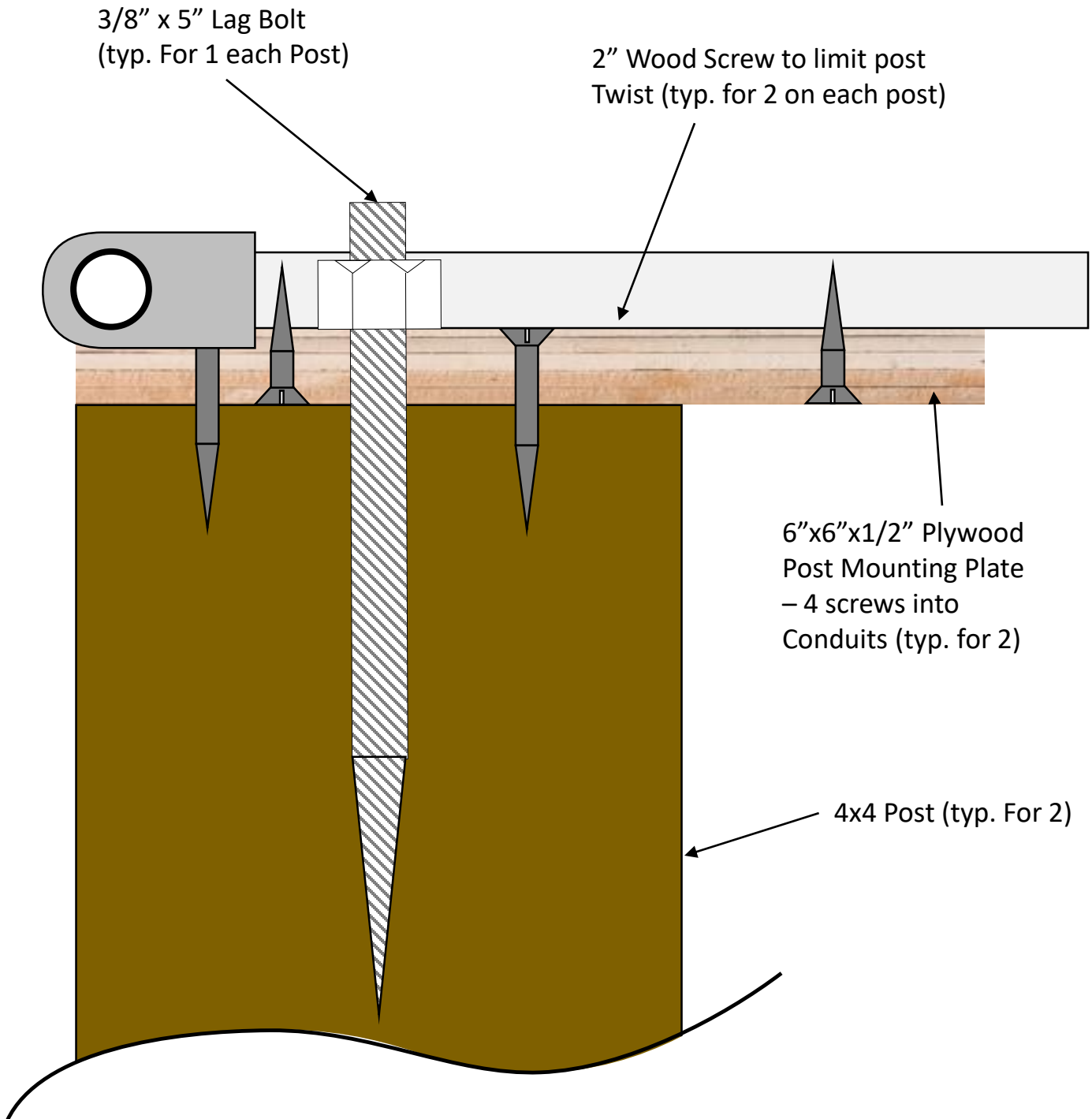
1 8' x 8' frame

2 – 12' 4x4 posts

5 – 1x6 facial boards 8' length or less



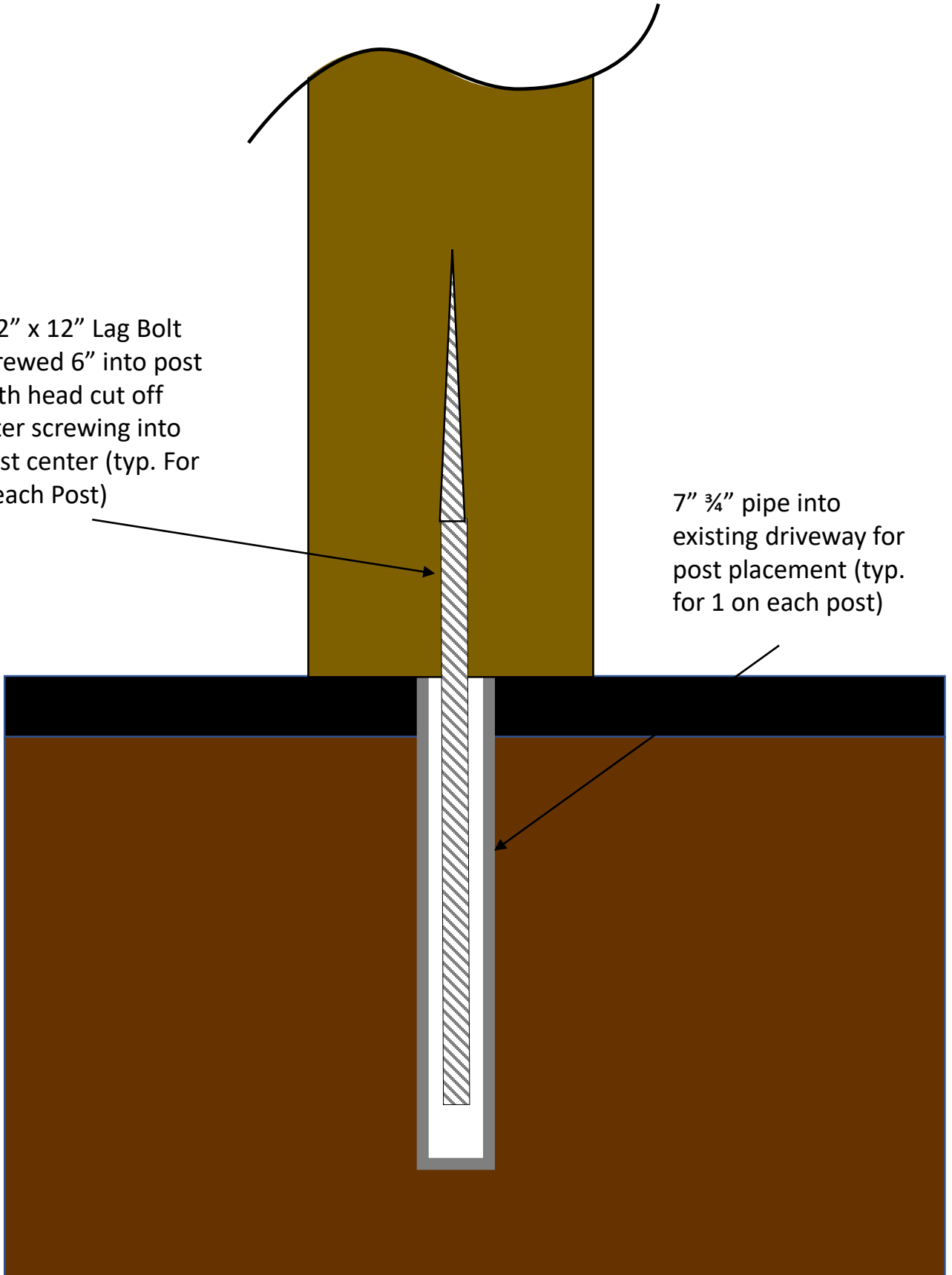
# Post Attachment to Roof Base Frame



# Post Attachment to Existing Pavement

1/2" x 12" Lag Bolt  
screwed 6" into post  
with head cut off  
after screwing into  
post center (typ. For  
1 each Post)

7" 3/4" pipe into  
existing driveway for  
post placement (typ.  
for 1 on each post)

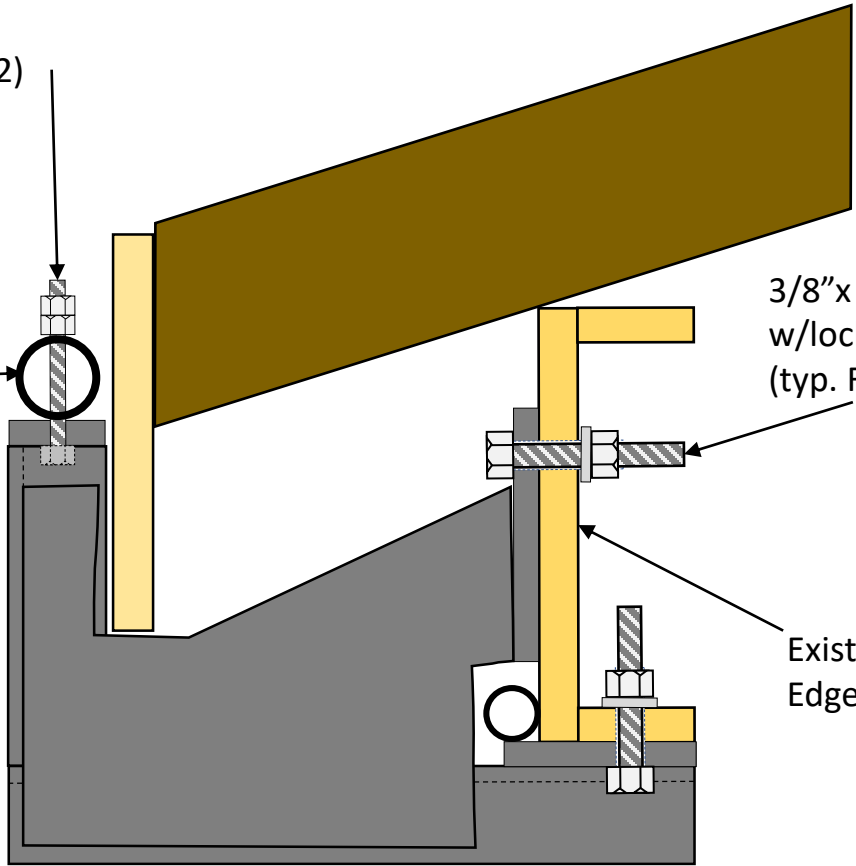


1/4"x 2.5" bolt  
Double Nut (typ. For 2)

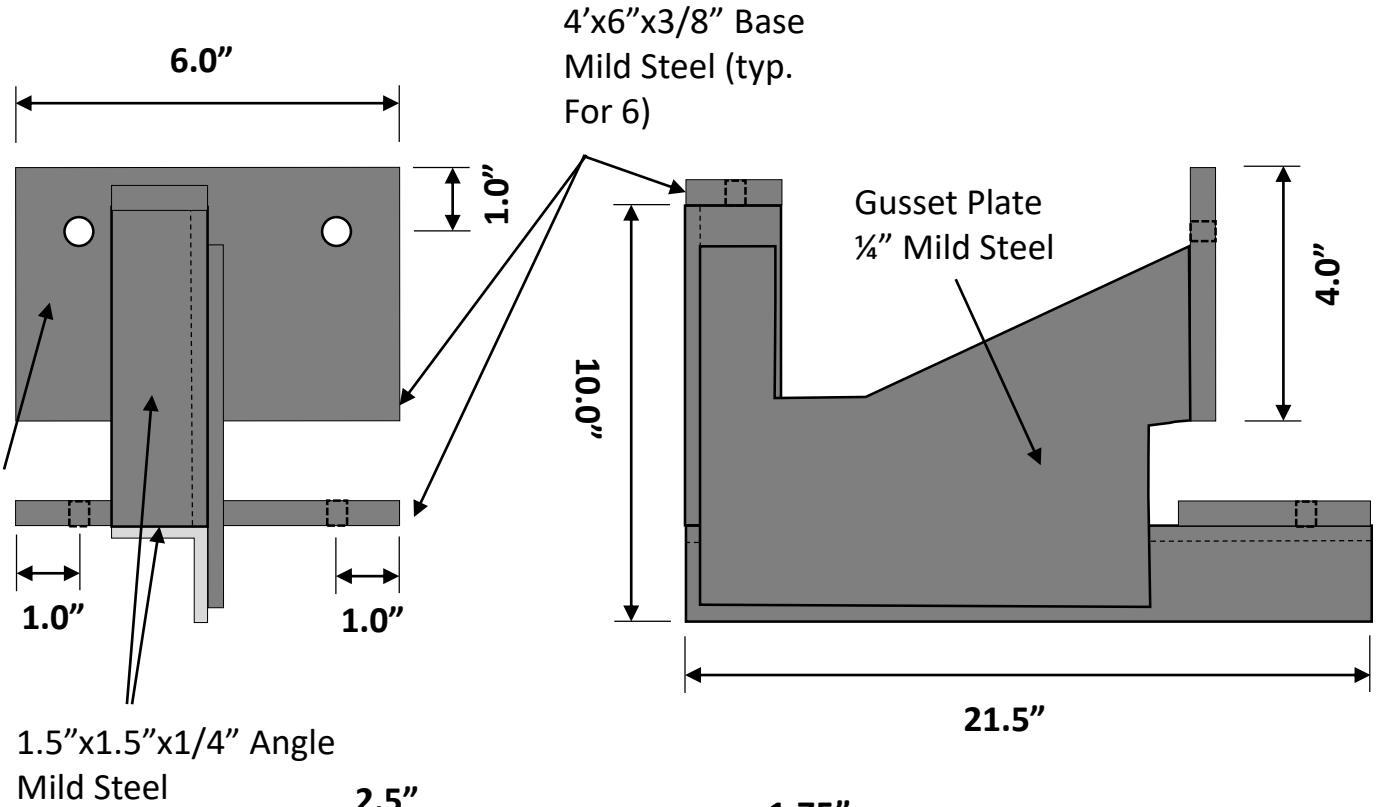
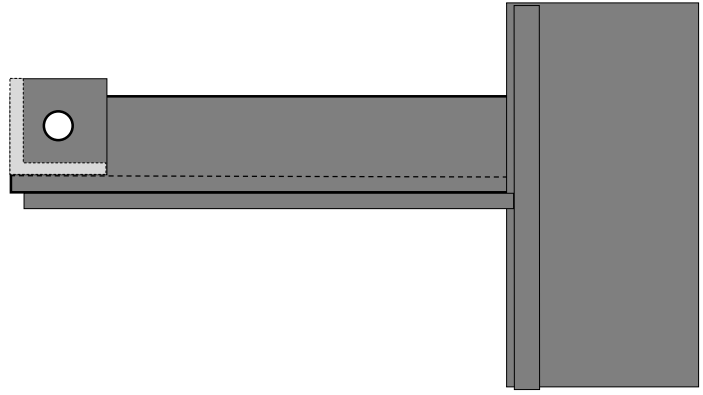
Conduit  
Frame

3/8"x 3" bolt  
w/lock washers  
(typ. For 8)

Existing Roof  
Edge Channel

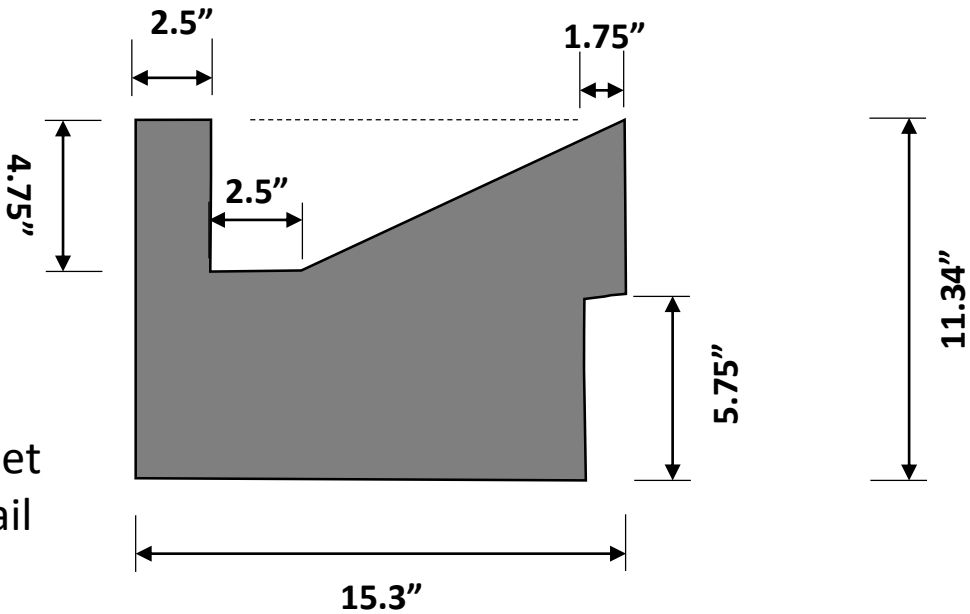


# Bracket –(typ. for 2)



1.5"x1.5"x1/4" Angle Mild Steel

21.5"



1/4" Gusset Plate Detail

15.3"

# Weld Diagram

