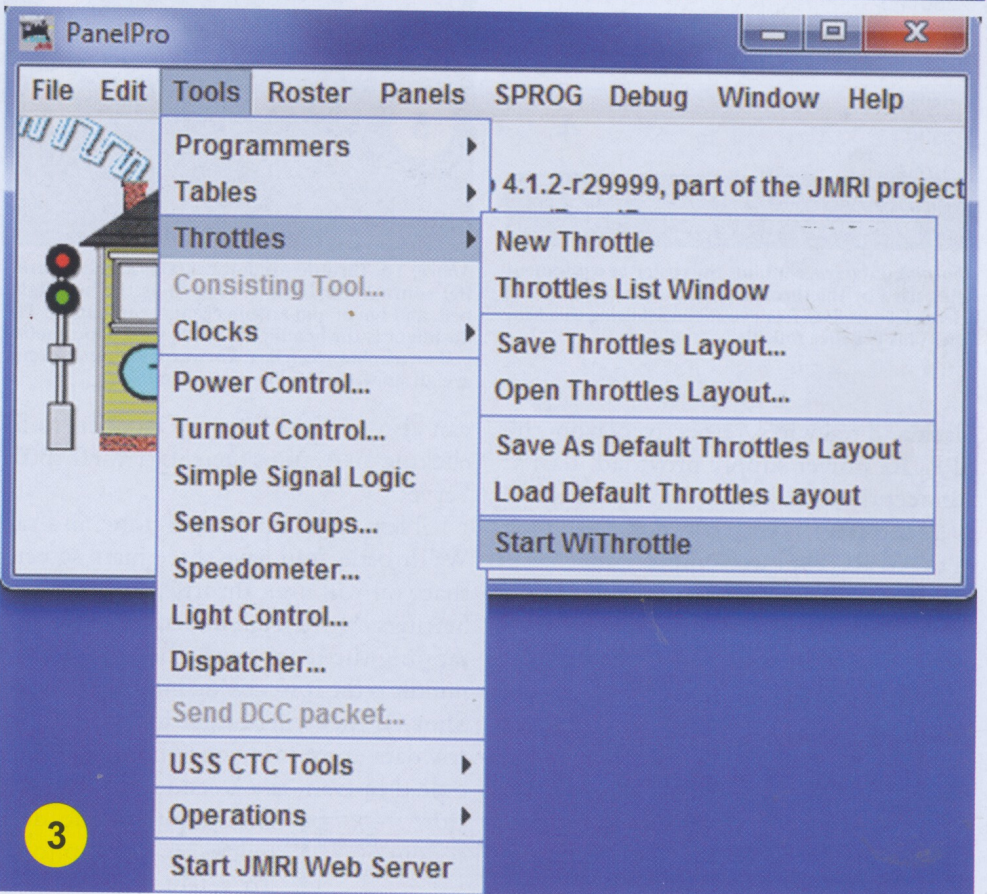
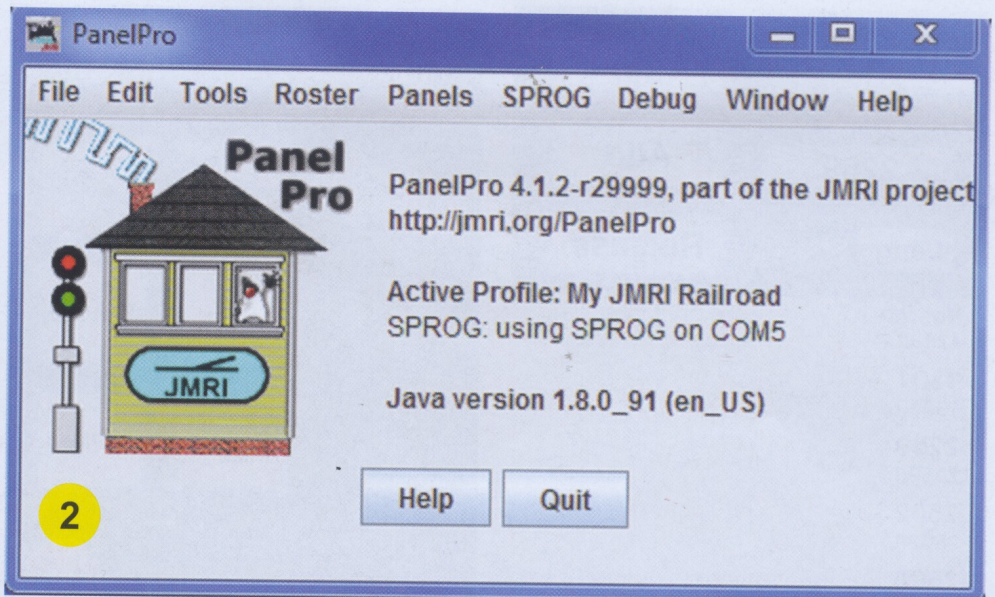


**Above:** To undertake this experiment, I used an iPhone, WIFI, and my SPROG 3 to build a DCC system. The throttle icon is in the lower left-hand of the screenshot above. It worked!

necting the power supply provided with the router, and plugging the power supply into an 110V outlet. You can configure your router, giving it a name and password that is related to your railroad. For the purpose of this particular exercise, I used the existing router on my network. If you are concerned about security, you may consider a separate computer and router for your railroad.

I already had JMRI on three of my computers. If you do not, start there by downloading JMRI and installing it. Go to <https://sourceforge.net/projects/jmri/?source=directory> to download a current copy to your computer. You will also need a current version of JAVA. It is easy to do using a search engine; type in "JAVA," and you will find the Oracle website and a link for a free download.

Now you are ready to download WiThrottle or Engine Driver from the APP store. It is a simple matter to open the APP Store and enter either application in the search window, click on it to download, and enter the information to pay for the full version, or not if you decide to use the lite version. You can get the full version later if you choose. At only \$10, I chose the full version from the begin-



ning. I own an iPhone and had already installed WiThrottle more than a year ago. I arranged my most often used applications on the first screen. WiThrottle is in the lower left-hand corner (**Screen Shot 1.**)

You will need to install the drivers for the SPROG 3. Follow the directions provided in the instruction sheet with the product, and you will have no problems. It is quite simple. Because I have been using SPROG for about two years, it was already installed on my computer. The instructions provided are pretty clear. There is additional information on installing SPROG

**Top:** The SPROG information should show when booting Panel Pro. Here is what my screen shows during startup. Notice the Java version and the COM port usage. These may need to be adjusted to get your computer to interface correctly.

**Above:** Under Tools and then Throttles is the Start WiThrottle setting. This will get the ball rolling. This menu also allows you to configure throttle settings and the like.

drivers in the November 2014 issue of this column.

Next, connect the output wires for the SPROG 3 to your railroad, one wire to the north rail the other to the south. They are marked TrA and TrB. Then, connect the input power, marked 0V and +V from the